

Installation of CDS/ISIS for Windows (WINISIS)

Standalone Mode

CDS/ISIS for Windows is generally distributed on 'Information Processing Tools' CDROM. This CDROM has Autorun feature and one can install the CDS/ISIS for Windows Version 1.4 directly from the opening screen (as shown in Figure 1) by clicking 'CDS/ISIS 1.4 for Windows'

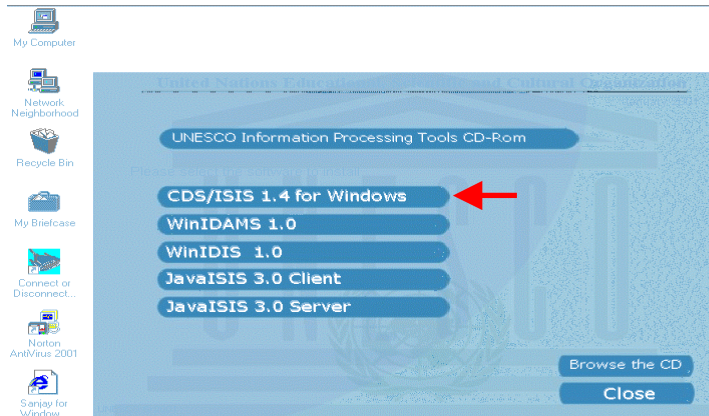


Figure 1: Opening Screen of 'Information Processing Tools' CDROM

Alternatively, one can install the same from /cds-isis/windows/v1.4 folder by clicking on Install Icon as shown in Figure 2.

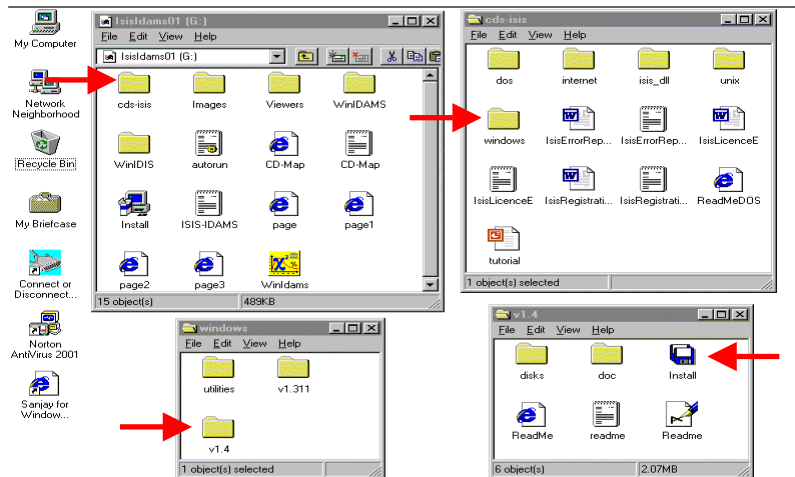


Figure 2: Opening Screen of 'Information Processing Tools' CDROM

In both the cases, the installation procedure will start. The Setup Programme will ask a number of questions on the placement of the various system files. It is suggested that for the first-time installation accept the proposed defaults. Most of the default parameters, described separately, will be used to create the system parameter file, SYSPAR.PAR. The information asked for installation is as follows:

- The main CDS/ISIS directory (by default **\WINISIS**)
- The Windows Programme Manager Group, where the CDS/ISIS icons will be placed (by default **CDS/ISIS for Windows**)
- The Database Directory, where the database files will be stored. For compatibility with the MS-DOS version of CDS/ISIS, it should be **\WINISIS\DATA**
- The Initial Dialogue Language (by default **EN**). CDS/ISIS supports **EN** (English), **FR** (French) and **SP** (Spanish) Languages.
- The CDS/ISIS Pascal Programme Directory, where the Pascal programmes will be stored. For compatibility with the MS-DOS version of CDS/ISIS, it should be **\WINISIS\PROG**
- The Windows System Font to be used (by default **S**, for small fonts).

Installation of CDS/ISIS for Windows (WINISIS)

Network Mode

The Installation on Local Area Network (LAN) is exactly the same as for Standalone Mode except that parameter 14 is specified in SYSPAR.PAR to enable multi-user functionalities of CDS/ISIS for Windows.

The various options of parameter 14 are as follows:

14=0	(or missing): Single user	Non-network version
14=1	Full Network Version	This parameter allows the simultaneous searching and updating of both the master and inverted file by two or more users. Because of this, the search function is slower than in single user mode, to allow proper task interlocking
14=2	Restricted Network Support	This parameter allows the simultaneous searching and updating of the master file (ie. many users may search and/or update the master file). The user guarantees, however, that the inverted file will not be updated while a database is active. This allows the search to be as fast as in the single user version.

There are 2 ways to work with CDS/ISIS for Windows under Network Mode:

Option 1

One can install WINISIS on client workstations and then modify the SYSPAR.PAR (in your client workstations) to directly point it to the database in your server:

```
1=c:\winisis\prog\  
2=c:\winisis\menu\  
3=c:\winisis\msg\  
4=c:\winisis\work\  
5=z:\winisis\data\  
14=1
```

where 'z' is the mapped network drive of your server and 'c' is the local drive.

Option 2

One can install WINISIS only on the Server and then create a shortcut in your client workstations pointing to the WINISIS on the server. The Server SYSPAR.PAR may look like this:

```
1=z:\winisis\prog\  
2=z:\winisis\menu\  
3=z:\winisis\msg\  
4=c:\winisis\work\  
5=z:\winisis\data\  
14=1
```

The difference between the two is that the Option 1 will be a bit faster since it has a separate WINISIS program and shares only the database.

Troubleshooting

In case of 32-bit Operating System like Windows 2000 and Windows XP,
Please download the CTL3D.DLL file from

<http://www.unesco.org/isis/files/winisis/windows/CTL3D/CTL3D.DLL>

and copy it into the Windows System Directory

Important: replace the existing file, if necessary!